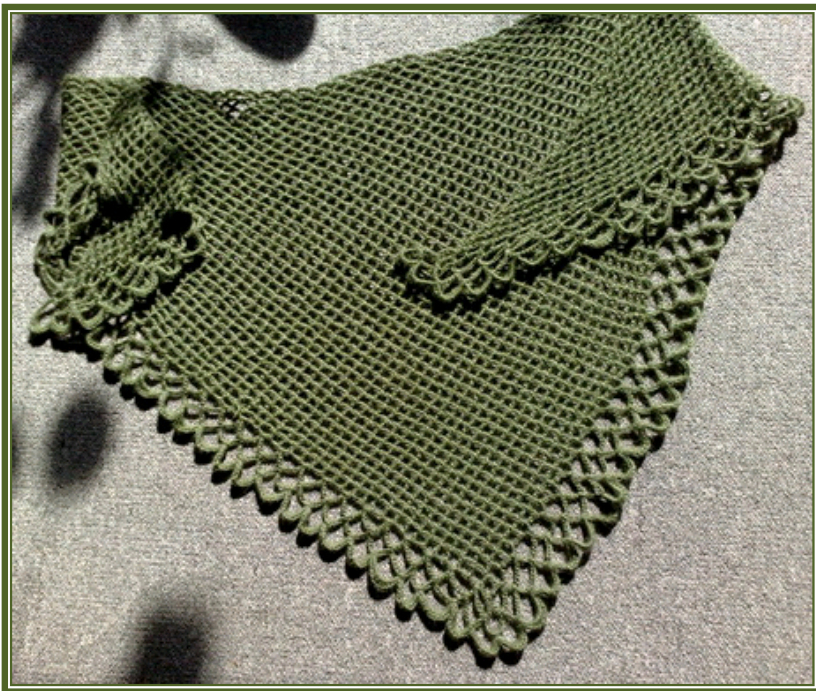


~ Coeur ~

An easy neck shawl with a lot of charm!



Crocheted from the point upwards with the border crocheted directly onto the shawl – as easy as it gets!

Gauge is not that important. My own version shows that I have app. 7½ 'diamonds' per 4".

My shawl is 73 'diamond' rows tall and it measures app. 24" x 63" (60 x 160 cm).

I used a crochet hook size E (European 3,5 mm) and 'homemade' yarn consisting of 3 thin threads. Probably equal to 4-5 ply (fingering/sport weight).

(US terms used! Translations for UK and Danish/Scandinavian terms at the bottom)

Directions:

Row 1: Ch 8, form a ring by making a tr into the 1st ch. Turn.

Row 2: Ch 8, 1 sl st into the ring, ch 5, 1 tr into 'the other side' of the ring. Turn.

Row 3: Ch 8, 1 sl st into the first 'diamond', ch 5, 1 sl st into the next 'diamond', ch 5, 1 tr into the same 'diamond'. Turn.

Row 4: Ch 8, 1 sl st into the first 'diamond', ch 5, 1 sl st into the next 'diamond', ch 5, 1 sl st into the next 'diamond', ch 5, 1 tr into the same 'diamond'. Turn.

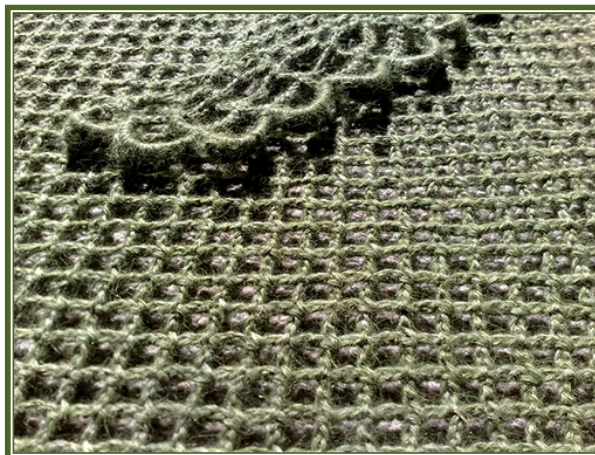
Continue in this manner until you have reached a size which is app. 3"-4" (8-10 cm) from the final width you are going for. There should be an uneven number of 'diamonds' for the border I've crochet to match up, but I'm sure you can also get it to work with an even number of rows of 'diamonds'.

On the last row the last 'diamond' is crocheted by making ch 6 and a dc into the same, last 'diamond'. Turn.

Border:

Row 1: Ch 10, sl st into the third row of 'diamonds' along the short side (jump over one row, sl st into the edge of the next row), ch 10, sl into each alternate row of 'diamonds' along the short side of the shawl, crocheting ch 10's between each to make the tongues.

At the point of the shawl (where you started) * ch 10, sl st into the first ring you made, repeat from * once more so you've made 3 sl st into that ring with ch 10's between them (two 'tongues' from that one first ring), continue with ch 10-'tongues' up along the other short side until you get to the other corner.



Reaching the other corner you make the last sl st into the last but one row of 'diamonds', ch 6, tr into the last row's diamond. Turn.

Row 2: Ch 8, sl st into the last tongue you just made, and then continue (ch 10, sl st into next 'tongue' from last row) in established 'tongue' pattern. When you reach the point of the shawl you crochet around the corner just as the 'tongues' show you, all the way up to the other tip/end of the shawl again. In the last horizontal row of 'diamonds' you ch 6, tr into the last row's diamonds again. Turn.

Row 3: Ch 8, sl st into the last 'tongue' you just made, and then continue (ch 10, sl st into next 'tongue' from last row) in established 'tongue' pattern. Getting to the point of the shawl again you crochet around the corner just as the 'tongues' show you, all the way up to the other tip/end of the shawl again. In the last horizontal row of 'diamonds' you ch 6, tr into the last row's diamonds again. Turn.

Final border row: Ch1, 1 sc, 2 hdc, 4 dc, 2 hdc, 2 sc in first 'tongue' around the ch's, (2 sc, 2 hdc, 4 dc, 2 hdc, 2 sc) in each 'tongue' all the way around.

Fasten off. Weave in ends.

Crochet Terms

British English	American English	Scandinavian (Danish)
Slip stitch (sl st)	Slip stitch (sl st)	Kædemaske (km)
Chain stitch (ch)	Chain stitch (ch)	Luftmaske (lm)
Double crochet (dc)	Single crochet (sc)	Fastmaske (fm)
Half treble crochet (htr)	Half double crochet (hdc)	Halvstangmaske (hstm)
Treble crochet (tr)	Double crochet (dc)	Stangmaske (stm)
Double treble crochet (dtr)	Treble crochet (tr)	Dobbelt stangmaske (dbl stm)
Triple treble crochet	Double treble crochet (dtr)	Tredobbelt stangmaske (tredbl stm)
Cast off	Bind off / fasten off	Luk af
Tension	Gauge	Hæklefasthed